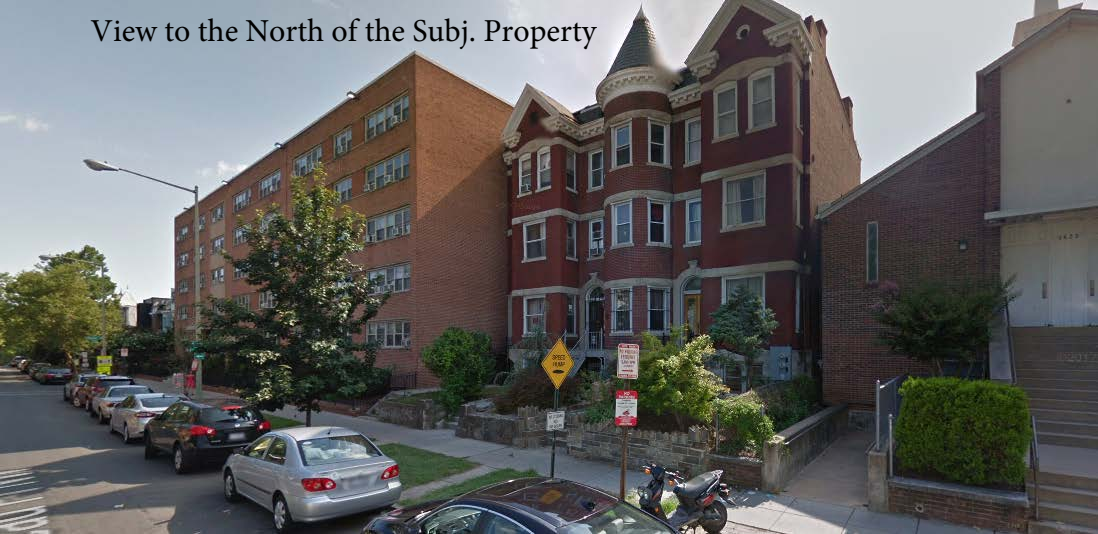


3423 Holmead Pl.
Subject Property



Board of Zoning Adjustment
District of Columbia
CASE NO.1982B
EXHIBIT NO.8

View to the North of the Subj. Property





Holmead Pl NW

3435 Holmead

Holmead Pl NW

Subj.
Property

Holmead Pl NW

Holmead Pl NW

Holmead Pl NW

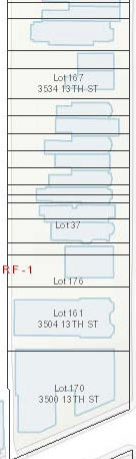
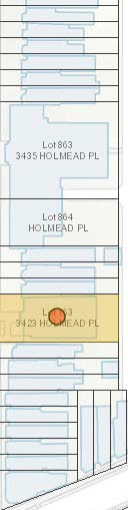
Subj.
Property

3500 13th Street

3504 13th

Monroe St NW

Google



RF-1

